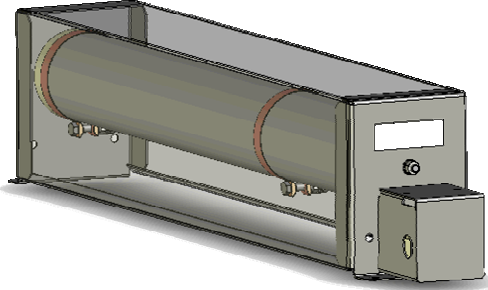
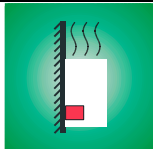
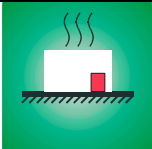




Series:
EFm – Tube Resistor unit 120W up to 280W
 With terminal box



Applications:
 As braking and chopper resistors
 In variable-speed drives
 In lifts and conveyors
 In the printing and paper industries
 In the packing, plastics and textile industries and
 in machine construction
 In the wire and wood processing industries

Types		EFm 3	EFm 4	EFm 5	
Pulse power in W T _a =25°C	ED 6%*	1140	1900	2660	
	ED 15%*	588	980	1372	
	ED 25%*	384	640	896	
	ED 40%*	264	440	616	
	ED 60%*	180	300	420	
Continuous rating in W T _a =25°C		120	200	280	
Resistance values		0.18 - 1390Ω	0.32 - 2380Ω	0.46 - 3380Ω	
Tolerance of resistance		± 10%			
Connection		M5 screw connection max. 25 A			
Degree of protection (DIN EN 60529)		IP 20 in according to screwed on condition			
Housing temperature at nominal rating T _a = 25°C		≤ 250 °C			
Cooling		Natural convection			
Storage temperature		-25 ... +85 °C			
Test voltage		2,5 kV AC			
Max. permissible operating voltage		800 V			
Approvals		UL possible			
Mounting positions					

* bezogen auf eine Zyklusdauer von 120 s

Series:
EFm – Tube Resistor unit 120W up to 280W
With terminal box

Construction

Drawing:



Dimensions:

Types	average weight in kg	width b1≤ in mm	width b2 in mm	high h1≤ in mm	length l1≤ in mm	length l2 in mm
EFm 3	1.2	73	48	101	245	222
EFm 4	1.7	73	48	101	345	322
EFm 5	2.2	73	48	101	445	422