

## TABLE OF CONTENTS: GP485

<b>WARRANTY</b> .....	pg. 1
<b>SAFETY INSTRUCTIONS</b> .....	pg. 2
<b>CHAPTER 1. General Information</b> .....	pg. 4
1.1 User's manual content	
1.2 Introduction	
1.2.1 General description	
1.2.2 Configurations	
1.2.3 Control via the GPIB port	
1.2.4 Input/output connections	
1.3 Accessories	
1.3.1 General	
1.3.2 Serial link cable	
1.3.3 AC cables	
<b>CHAPTER 2. Specifications</b> .....	pg. 5
2.1 GP485 specifications	
2.2 Supplemental characteristics	
<b>CHAPTER 3. Installation and Configuration</b> .....	pg. 6
3.1 General	
3.2 Initial inspection	
3.2.1 Mechanical inspection	
3.2.2 Preparation for use	
3.2.3 AC source requirements	
3.3 Cooling and placement	
3.4 Rack mounting	
3.5 Repackaging for shipment	
3.6 Power connection.....	pg. 7
3.7 Connecting the cables	
3.7.1 RS485 cable	
3.7.2 GPIB cable	
3.7.3 AC cord	
3.8 Connections in a system.....	pg. 8
3.9 RS485 connector pinout	
3.10 Connecting GP485 to Zup power supply.....	pg. 9
3.11 The GPIB connector	
3.12 Controller default configuration	
3.13 Outline drawing.....	pg. 10
<b>CHAPTER 4. Operating Instructions</b> .....	pg. 11
4.1 Introduction	
4.2 Controls and indicators	
4.2.1 Front panel	
4.2.2 Rear panel.....	pg.12
4.2.3 Top panel.....	pg.13

---

## TABLE OF CONTENTS: GP485

4.3 Turn-on checkout procedure.....	pg.14
4.3.1 General	
4.3.2 Prior to operation	
4.3.3 Power on	
4.4 Status information and error handling characteristic	
4.5 Programming considerations	
4.6 Programming message format.....	pg.15
4.6.1 Programming message example	
4.6.2 How messages are processed	
4.7 Function arguments	
4.7.1 Abbreviations for arguments	
4.8 Addressing the GP485 and serial port	
4.8.1 Address of the GP485	
4.8.2 Address of the serial port.....	pg.16
4.8.3 Addressing the GP485 and serial device as listeners	
4.8.4 Addressing the GP485 and serial device as talkers	
4.9 GPIB read and write termination methods (END and EOS).....	pg.17
4.10 Serial port transmission	
4.11 Operation of the GP485 as a GPIB device	
4.12 Serial poll responses	
4.13 Service request (SRQ).....	pg.18
4.13.1 Service Request at Power On	
4.13.2 SRQ* conditions	
4.13.3 SRQ* generation by the GP485	
4.13.4 SRQ* generation by Zup Power Supply	
4.13.5 GP485 initialize for using SRQ*	
4.14 Parallel poll.....	pg.19
4.14.1 Take control (TCT)	
4.14.2 Group execute trigger (GET)	
4.14.3 Go to local (GTL)	
4.14.4 Device clear	
<b>CHAPTER 5. Functions and Commands.....</b>	<b>pg.20</b>
5.1 Introduction	
5.2 Function names	
5.2.1 Default settings and related functions	
5.2.2 List of functions by group	
5.2.3 Alphabetical function list.....	pg.21
5.3 Command function syntax	
<b>CHAPTER 6. Maintenance.....</b>	<b>pg.26</b>
6.1 Introduction	
6.2 Units under warranty	
6.3 Periodic maintenance	
6.4 Adjustment and calibration	
6.5 Part replacement and repairs	
6.6 Fuse ratings	
<b>USER'S MANUAL INDEX.....</b>	<b>pg.27</b>

---

## **WARRANTY**

This Nemic-Lambda product is warranted against defects in materials and workmanship for a period of three years from date of shipment. During the warranty period, Nemic-Lambda will, at it's option, either repair or replace products which prove to be defective.

## **LIMITATION OF WARRANTY**

The warranty shall not apply to defects resulting from improper or inadequate usage or maintenance by the buyer, buyer supplied products or interfacing. The warranty shall not apply to defects resulting from unauthorized modifications or from operation exceeding the environmental specifications of the product.

Nemic-Lambda does not warrant the buyers circuitry or malfunctions of Nemic-Lambda products resulting from the buyer's circuitry. Furthermore, Nemic-Lambda does not warrant any damage occurring as a result of the buyer's circuitry or the buyer's - supplied products.

**No other warranty is expressed or implied.**

## **WARRANTY SERVICE**

This product must be returned to an authorized Nemic-Lambda service facility for repairs or other warranty service. For products returned to Nemic-Lambda for warranty service, the buyer shall prepay shipping charges to Nemic-Lambda and Nemic-Lambda shall pay the shipping charges to return the product to the buyer.

## **DISCLAIMER**

The information contained in this document is subject to change without notice. Nemic-Lambda shall not be liable for errors contained in this document or for incidental or consequential damages in connection with the furnishing, performance or use of this material. No part of this document may be photocopied, reproduced or translated into another language without the prior written consent of Nemic-Lambda.

## **TRADEMARK INFORMATION**

Microsoft™ and Windows™ are trademarks of Microsoft Corporation.

## **SAFETY INSTRUCTIONS**

### **CAUTION**

The following safety precaution must be observed during all phases of operation, service and repair of this equipment. Failure to comply with the safety precautions or warnings in this document violates safety standards of design, manufacture and intended use of this equipment and may impair the built-in protections within.

Nemic-Lambda shall not be liable for user's failure to comply with these requirements.

### **INSTALLATION CATEGORY**

The GP485 Series has been evaluated to INSTALLATION CATEGORY II. Installation Category (over voltage category) II: local level, appliances, portable equipment etc.. With smaller transient over voltages than Installation Category (over voltage category) III.

### **GROUNDING**

This product is a Safety Class 1 instrument. To minimize shock hazard, the instrument chassis must be connected to an electrical ground. The instrument must be connected to the AC power supply mains through a three conductor power cable, with the ground wire firmly connected to an electrical ground (safety ground) at the power outlet.

For instruments designed to be hard - wired to the supply mains, the protective earth terminal must be connected to the safety electrical ground before an other connection is made. Any interruption of the protective ground conductor, or disconnection of the protective earth terminal will cause a potential shock hazard that might cause personal injury.

### **FUSES**

Fuse must be changed by authorized Nemic-Lambda service personnel only. For continued protection against risk of fire, replace only with the same type and rating of fuse. Refer to maintenance instructions in chapter 6 for fuse rating.

### **INPUT RATINGS**

Do not use AC supply which exceeds the input voltage and frequency rating of this instrument. The input voltage and frequency rating of the GP485 is; 100-240V~, 50/60Hz. For safety reasons, the mains supply voltage fluctuations should not exceed +/- 10% of nominal voltage.

### **LIVE CIRCUITS**

Operating personnel must not remove the instrument cover. No internal adjustment or component replacement is allowed by non-Nemic-Lambda qualified service personnel. Never replace components with power cable connected. To avoid injuries, always disconnect power, discharge circuits and remove external voltage sources before touching components.

### **PART SUBSTITUTIONS AND MODIFICATIONS**

Part substitutions and modifications are allowed by authorized Nemic-Lambda service personnel only. For repairs or modifications, the instrument must be returned to a Nemic-Lambda service facility.

### **ENVIRONMENTAL CONDITIONS**

The GP485 series safety approval applies to the following operating conditions:

- \* Indoor use
- \* Maximum relative humidity: 90% (no dew drop)
- \* Pollution degree 2
- \* Ambient temperature: 0°C to 50°C
- \* Altitude: up to 3,000 m

## SAFETY INSTRUCTIONS

### SAFETY SYMBOLS



Instruction manual symbol. The instrument will be marked with this symbol when it is necessary for the user to refer to the instruction manual.



Indicates hazardous voltage.



Indicates ground terminal.

**WARNING**

The **WARNING** sign denotes a hazard. An attention to a procedure is called. Not following procedure correctly could result in personal injury. A **WARNING** sign should not be skipped and all indicated conditions must be fully understood and met.

**CAUTION**

The **CAUTION** sign denotes a hazard. An attention to a procedure is called. Not following procedure correctly could result in damage to the equipment. Do not proceed beyond a **CAUTION** sign until all indicated conditions are fully understood and met.

#### FCC COMPLIANCE NOTICE:

Note: This equipment has been tested and found to comply with the limits for a Class A digital device, pursuant to part 15 of the FCC Rules. These limits are designed to provide reasonable protection against harmful interference when the equipment is operated in a commercial environment. This equipment generates uses, and can radiate radio frequency energy and, if not installed and used in accordance with the instruction manual, may cause harmful interference to radio communications. Operation of this equipment in a residential area is likely to cause harmful interference in which case the user will be required to correct the interference at his own expense.

## CHAPTER 1 GENERAL INFORMATION

### 1.1 USER'S MANUAL CONTENT

This user's manual contains the operating instructions, installation instructions and specifications of the GP485. For information related to operation with the Zup Series, refer to Nemic-Lambda's Zup User's Manual.

### 1.2 INTRODUCTION

#### 1.2.1 General description

The GP485 is a high performance GPIB-to-RS485 interface. It enables a computer with a GPIB port to communicate with up to 31 Zup power supplies via a single GP485 unit. The GP485 has all the software and logic required to implement the physical and electrical specifications of the IEEE488 and RS485 standards.

#### 1.2.2 Configurations

The GP485 can be configured into a GPIB system of up to 14 controllers. Each controller can control up to 31 Zup units in dual GPIB addresses. One address to configure itself and one to communicate with the Zup units.

#### 1.2.3 Control via the GPIB port

The following parameters can be programmed via the GPIB communication port:

1. GP485 configuration
2. Zup parameters ( refer to Zup User's Manual Par. 1.2.3 )

#### 1.2.4 Input/Output connections

Connections of AC source, GPIB port and RS485 port are made to rear panel connectors.

AC input: IEC inlet

GPIB port: Standard 24 pin shielded champ female connector

RS485 port: EIA-568A, shielded connector

### 1.3 ACCESSORIES

#### 1.3.1 General

Accessories are delivered with the GP485 upon ordering. Below are listed possible accessories and ordering numbers:

ORDER#	DESCRIPTION
NL100	19" rack, 3U height
NL101	Blank panel for 19" rack
NL103	Additional User's Manual

#### 1.3.2 Serial link cable

Serial link cable for linking the GP485 to the Zup units via RS485 communication is provided with each GP485. Cable description: 0.5m typ. length, shielded, EIA-568A type plugs, 8 contacts.

#### 1.3.3 AC Cables

PART No.	MARKET	DESCRIPTION
NC301	USA	15A, 125V, unshielded, 2m typ. length, with IEC320 connector on one side and NEMA-5-15P connector on the other side.
NC302	EUROPE	10A, 250V, unshielded, 2m typ. length, with IEC320 connector on one side and INT'L standard VII, dual earthing on the other side.
NC303	GENERAL	10A, 250V, unshielded, 2m typ. length, with IEC320 connector on one side and unterminated striped wires on the other side. Use the cable only with plug approved by the national safety standards of the country of usage.

## CHAPTER 2 SPECIFICATIONS

### 2.1 GP485 SPECIFICATIONS

1	Input Voltage / freq.	(*1)	-	85~265Vac continuous, 47~63Hz
2	Input Current	100/200Vac	-	Less than 0.14A at 100V, 0.07A at 200V
3	Inrush Current	100/200Vac (*2)	A	15 / 30
4	IEEE488 capability		-	SH1, AH1, T6, TE0, L4, LE0, SR1, RL0, PP1, DC1, DT0, C0, E1, E2
5	Baud rate		bps	Default: 9600 Optional: 300, 600, 1200, 2400, 4800
6	Indications		-	LED's: Power / Ready, Talk, Listen, SRQ
7	Operating temp.		°C	0~50
8	Storage temp.		°C	- 20 ~70
9	Operating humidity		-	30~90% RH, no dew drop
10	Storage humidity		-	10~90% RH, no dew drop
11	Conducted emission		-	EN55022B, VCCI-2 , FCC part 15 (class B)
12	Radiated emission		-	EN55022B, VCCI-2 , FCC part 15 (class B)
13	Weight		Kg	1.95
14	Size (W*H*D)		mm	70x124x350
15	Applicable safety standards		-	UL3111-1, EN61010-1
16	Applicable EMC standards		-	EN61326-1, IEC61326-1
17	Withstand voltage		-	Input-Output: 3KVac, Input-Chassis: 1.5KVac Output-Chassis: 500Vac
18	Leakage current		mA	Less than 0.4
19	Vibration (with mounting screws)		G	1~55Hz, Amp. (sweep 1 min) less than 2G, X, Y, Z 1hour each
20	Shock		G	Less than 20

Notes: \* 1: For cases where conformance to various safety specs (UL, IEC etc.) are required, to be described as 100-240VAC, 50/60Hz on name plate.

\* 2: At cold start. Ta = 25°C.

### 2.2 SUPPLEMENTAL CHARACTERISTICS

The supplemental characteristics give typical but non-warranted performance characteristics. The supplemental characteristics are useful in accessing applications for the GPIB controller. Types of supplemental characteristics are listed below.

1. RELIABILITY DATA: Reliability performance of the controller.
2. IEC1000 DATA: Performance of the controller under IEC 1000 test conditions.
3. EMI DATA: Typical EMI ( Conducted and Radiated ) performance of the controller.

The supplemental characteristics data are held in each Nemic-Lambda sales and service facility. For further details, please contact the Nemic-Lambda representative nearest you.

## **CHAPTER 3 INSTALLATION AND CONFIGURATION**

### **3.1 GENERAL**

This chapter contains instructions for initial inspection, preparation for use and repackaging for shipment.

Connection to PC and Zup power supplies is described in Par. 3.7 ~ 3.11.

#### **NOTE**

GP485 generates a magnetic field which might affect the operation of other instruments. If your equipment is susceptible to magnetic fields, do not position adjacent to the GP485.

### **3.2 INITIAL INSPECTION**

Prior to shipment the GP485 was inspected and found free of mechanical or electrical defects. Upon unpacking of the GP485, inspect for any damage which may have occurred in transit. Keep all packing materials until inspection has been completed. If any damage is detected, file a claim with the carrier immediately and notify the Nemic-Lambda sales or service facility nearest you.

#### **3.2.1 Mechanical inspection**

The mechanical inspection should confirm that there is no exterior damage to the GP485 such as broken connectors and front panel are not scratched or cracked.

#### **3.2.2 Preparation for use**

In order to be operational, the GP485 must be connected to an appropriate AC source. The line voltage must be within the GP485 specification. DO NOT apply power before reading paragraph 3.2.3

#### **3.2.3 AC Source requirements**

The GP485 can be operated from a nominal 100V to 240V, single phase, 47 ~ 63Hz. The input voltage range and current required is specified in chapter 2. Make sure that the AC voltage does not fall below "low limit" specifications.

### **3.3 COOLING AND PLACEMENT**

The GP485 should be used in an area where the ambient temperature does not exceed +50°C. Do not install the GP485 adjacent to a hot surface or heat generating equipment.

### **3.4 RACK MOUNTING**

GP485 can be mounted in a standard 19" rack (3U height) and occupy 1/6 rack length. The GP485 should be fixed by M4 screws replacing the rubber feet on the bottom of the GP485. Screws must not protrude more than 6mm into the unit. Refer to the outline drawing in this chapter for mounting details.

### **3.5 REPACKAGING FOR SHIPMENT**

To ensure safe transportation of the instrument, it is recommended to use the original package. The original packaging material is reusable. If the original package is not available, contact the Nemic-Lambda Sales or service facility near you for details on obtaining suitable packaging and shipping information. Please attach a tag to the GP485 unit describing the problem and specifying the owner, model number and serial number of the unit.

## 3.6 POWER CONNECTION

### **CAUTION**

Connection of the GP485 to an AC source should be made by an electrician or other qualified personnel.

The GP485 is equipped with a three conductor power cable. The third conductor is the ground conductor. When the cable is plugged-in to an appropriate receptacle, the GP485 is grounded. Under no circumstances should the GP485 be operated without an adequate ground connection. If a two contact receptacle is encountered, it must be replaced by a three contact receptacle, properly grounded. This operation should be done by a qualified electrician. It is recommended to keep the AC input wires separate from the communication cables to avoid interference.

### **WARNING**

Some components inside the GP485 are at AC voltage even when the On/Off switch is in the "Off" position. To avoid the hazard of electric shock, disconnect line cord and wait 2 minutes before removing cover.

## 3.7 CONNECTING THE CABLES

### **WARNING**

Turn off the AC input power before making or changing any rear panel connection. Make sure that all connections are securely tightened before applying power.

### **3.7.1 RS485 cable**

Connect one end of the serial communication cable to the RS485 OUT connector located on the GP485 rear panel. Connect the other end of the cable to the Zup power supply RS485/232 IN connector. Be sure to use only shielded cable, and follow the RS485 cabling restrictions.

### **3.7.2 GPIB cable**

Connect one end of the GPIB cable to the GPIB connector located on the GP485 rear panel and tighten the thumb screws on the connector. Connect the other end to the GPIB connector on the GPIB controller. Be sure to use only shielded cable, and follow all IEEE488 cabling restrictions.

### **3.7.3 AC cord**

Connect the AC cord to the GP485 ac input connector located on the rear panel, then connect the plug to an ac outlet of the correct voltage as specified in the specifications in chapter 2.

### 3.8 CONNECTIONS IN A SYSTEM

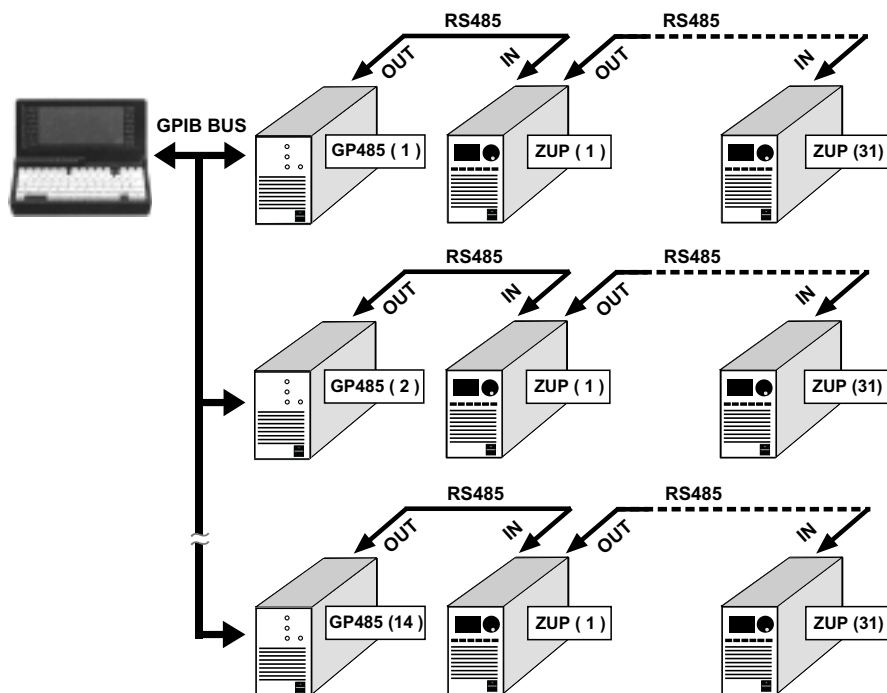


Fig. 3-1: System connections

### 3.9 RS485 CONNECTOR PINOUT

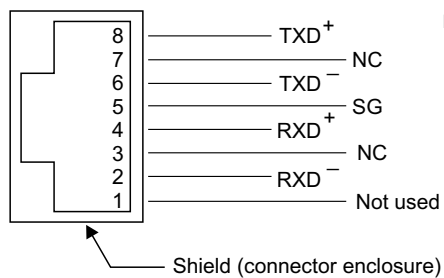


Fig. 3-2: The RS485 connector pinout (view of GP485 rear panel)

### 3.10 CONNECTING GP485 TO ZUP POWER SUPPLY

Fig.3-3: GP485 to ZUP cable layout

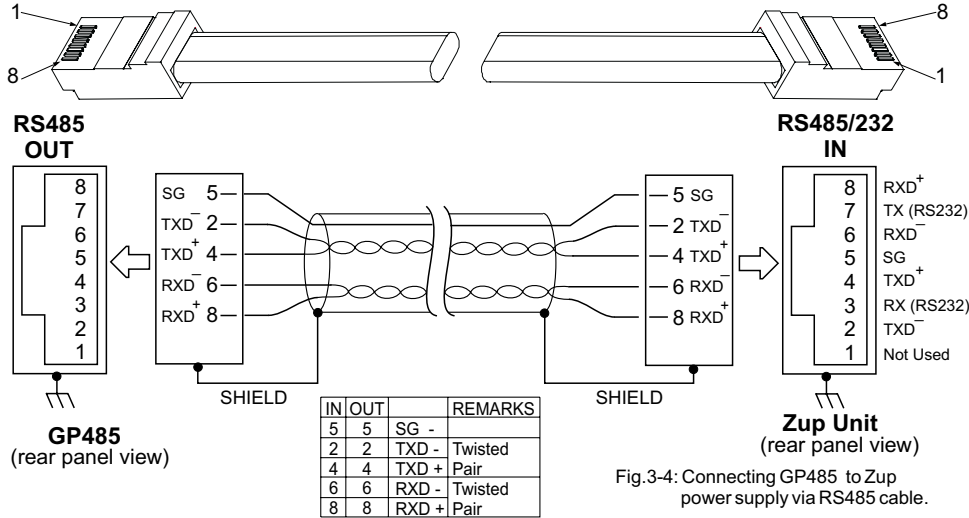


Fig.3-4: Connecting GP485 to Zup power supply via RS485 cable.

### 3.11 THE GPIB CONNECTOR

The GPIB connector is a standard 24-pin shielded Champ female connector with metric screwlock hardware. Fig. 3-5 shows a diagram of the GPIB connector and the signals supported. The \* suffix indicates that the signal is active low.

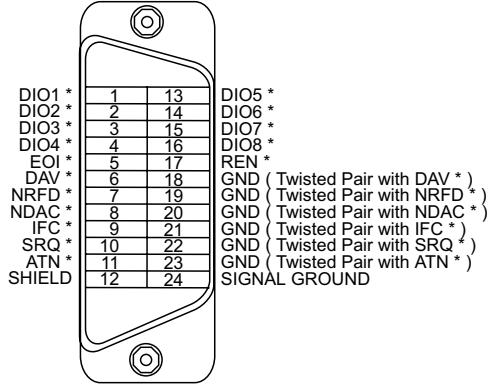


Fig. 3-5: The GPIB Connector and Signal Designations

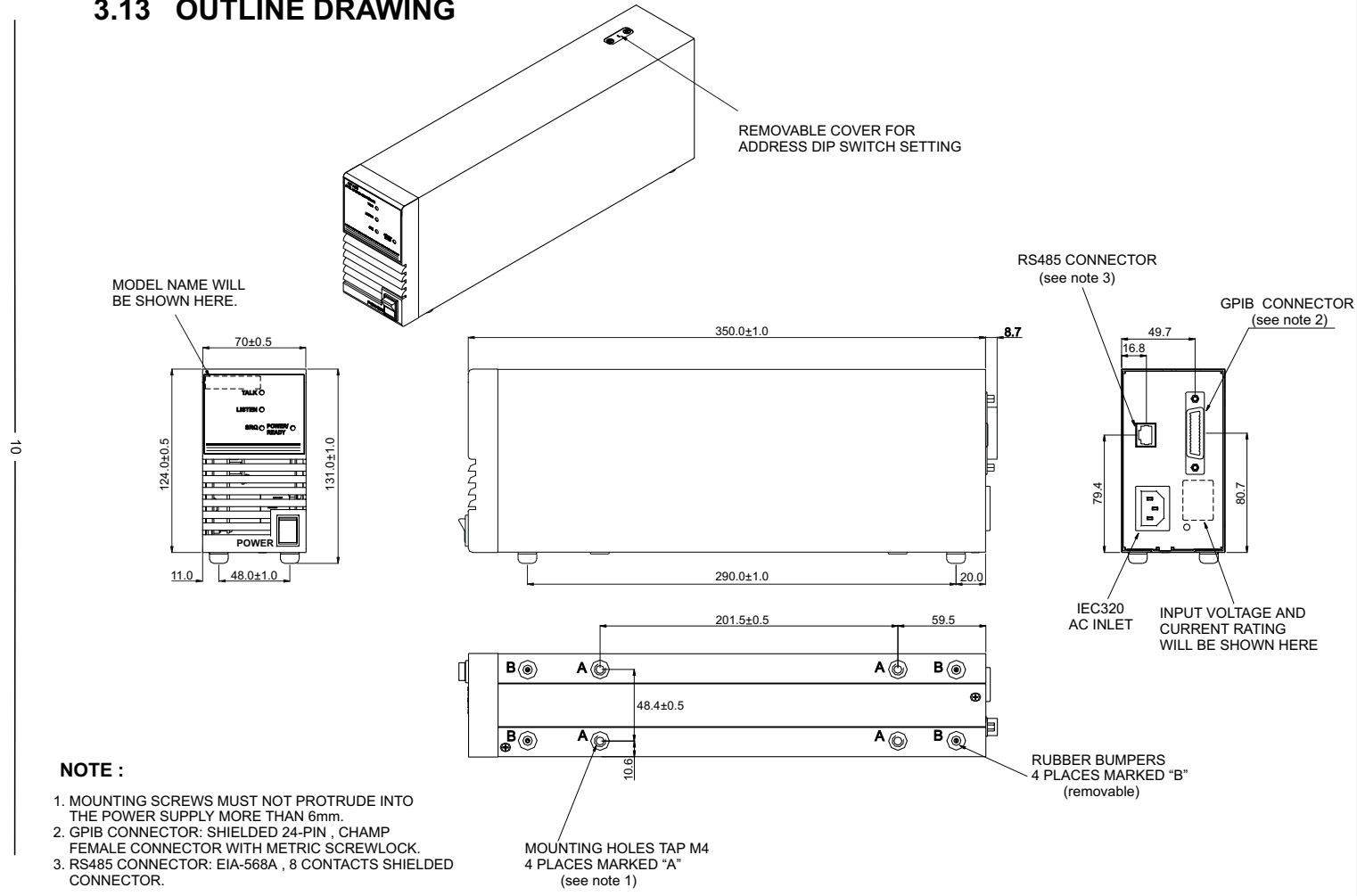
### 3.12 CONTROLLER DEFAULT CONFIGURATION

The GP485 power-up default setting is as follows:

GPIB address ( the GP485 is shipped from Factory with address "0")  
 8 data bits/character  
 1 stop bit/character  
 no parity  
 9600 baud rate

If you want to change any default settings, you must change the DIP switch settings or set it by software. To change the DIP switch, shut down the system and then refer to Par. 4.2.3. To change the serial port setting refer to table 5-5, **sps** command.

### 3.13 OUTLINE DRAWING



**NOTE :**

1. MOUNTING SCREWS MUST NOT PROTRUDE INTO THE POWER SUPPLY MORE THAN 6mm.
2. GPIB CONNECTOR: SHIELDED 24-PIN , CHAMP FEMALE CONNECTOR WITH METRIC SCREWLOCK.
3. RS485 CONNECTOR: EIA-568A , 8 CONTACTS SHIELDED CONNECTOR.

## CHAPTER 4 OPERATING INSTRUCTIONS

### 4.1 INTRODUCTION

This chapter describes the operating modes, controls and indicators of the GP485 controller. It also describes how to program the GP485 controller, status and error handling information, programming considerations, programming messages, function arguments, addressing, GPIB read and write termination methods, serial port transmissions and mode functions.

### 4.2 CONTROLS AND INDICATORS

#### 4.2.1 Front panel

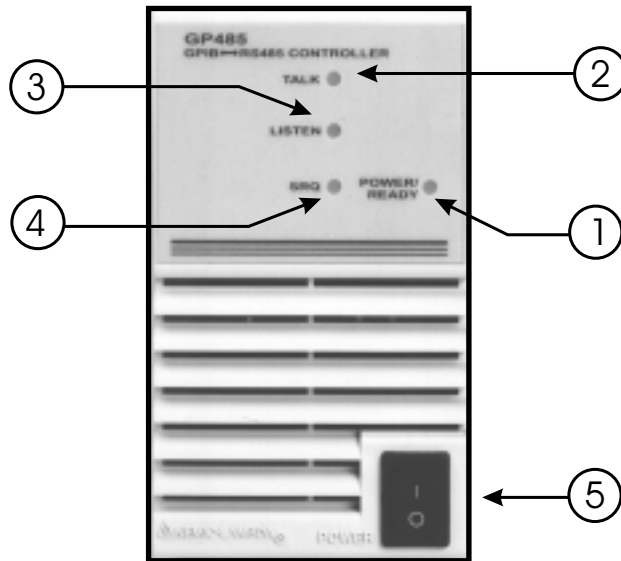


Fig. 4-1: Front panel controls and indicators

Table 4-1: Front panel controls and indicators

#	Control/Indicator	Indication
1	Power/Ready	Indicates that the power is "ON" and the self-test has passed successfully. The unit is ready to operate once the LED illuminates.
2	Talk	Indicates that the GP485 is addressed as a GPIB Talker.
3	Listen	Indicates that the GP485 is addressed as a GPIB Listener.
4	SRQ	Indicates that the GP485 signal line SRQ is asserted.
5	AC ON/OFF	Turns AC power On and Off.

## 4.2.2 Rear Panel

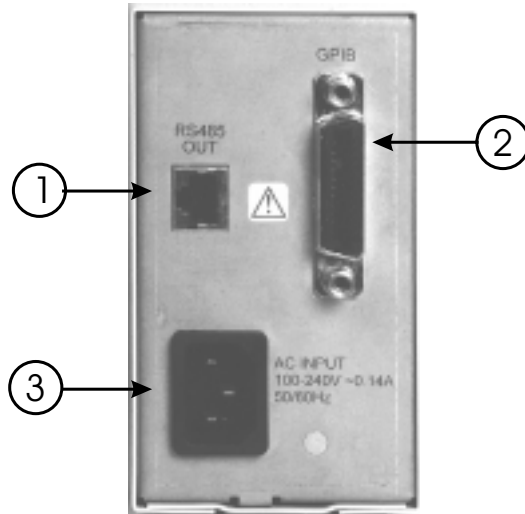


Fig. 4-2: Rear Panel Connections

Table 4-2: Rear Panel Connections

#	Connector	Description	Par.
1	RS485 OUT	EIA-568A shielded type connector, used for RS485 communication with Zup power supplies.	3.9 , 3.10
2	GPIB	Shielded 24-pin Champ female connector, with metric screwlock. Used for GPIB communication with the GPIB controller.	3.8 , 3.11
3	AC Input	IEC type appliance inlet.	3.2.3

### 4.2.3 Top panel

Switches 8 through 4 set the GPIB address of the GP485. The serial device address is the GP485 GPIB address plus 1, refer also to par. 4.8. Before setting the address switches, find two consecutive addresses that are not used by any other GPIB devices in the system. In Figure 4-2, switches 8 to 4 are ON, OFF, ON, OFF and OFF respectively, indicating that the GP485 is at GPIB address 5 and the serial device is at GPIB address 6.

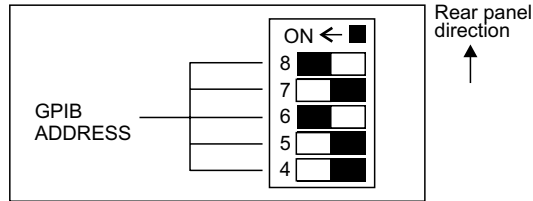


Figure 4-2: sample of address setting

Table 4-3 shows the switch settings for the GP485 address and the corresponding serial device address.

Table 4-3: GPIB address switch settings for GP485

8	7	Switches			GP485	Serial Port
		6	5	4	Address	Address
OFF	OFF	OFF	OFF	OFF	0	1
ON	OFF	OFF	OFF	OFF	1	2
OFF	ON	OFF	OFF	OFF	2	3
ON	ON	OFF	OFF	OFF	3	4
OFF	OFF	ON	OFF	OFF	4	5
ON	OFF	ON	OFF	OFF	5	6
OFF	ON	ON	OFF	OFF	6	7
ON	ON	ON	OFF	OFF	7	8
OFF	OFF	OFF	ON	OFF	8	9
ON	OFF	OFF	ON	OFF	9	10
OFF	ON	OFF	ON	OFF	10	11
ON	ON	OFF	ON	OFF	11	12
OFF	OFF	ON	ON	OFF	12	13
ON	OFF	ON	ON	OFF	13	14
OFF	ON	ON	ON	OFF	14	15
ON	ON	ON	ON	OFF	15	16
OFF	OFF	OFF	OFF	ON	16	17
ON	OFF	OFF	OFF	ON	17	18
OFF	ON	OFF	OFF	ON	18	19
ON	ON	OFF	OFF	ON	19	20
OFF	OFF	ON	OFF	ON	20	21
ON	OFF	ON	OFF	ON	21	22
OFF	ON	ON	OFF	ON	22	23
ON	ON	ON	OFF	ON	23	24
OFF	OFF	OFF	ON	ON	24	25
ON	OFF	OFF	ON	ON	25	26
OFF	ON	OFF	ON	ON	26	27
ON	ON	OFF	ON	ON	27	28
OFF	OFF	ON	ON	ON	28	29
ON	OFF	ON	ON	ON	29	30
OFF	ON	ON	ON	ON	30	0

## 4.3 TURN-ON CHECKOUT PROCEDURE

### 4.3.1 General

The following procedure ensures that the GP485 controller is operational and may be used as a basic incoming inspection check.

### 4.3.2 Prior to operation

Check that the rear panel RS485 cable is connected as shown in Fig. 3-3. Connect the GPIB cable between the GP485 and the host computer. (Refer to Fig. 3-4 for GPIB connector description). Connect the GP485 to an AC source as described in paragraph 3.6.

### 4.3.3 Power on

Turn on the GP485. Wait approx. 5 seconds until the Power/Ready led illuminates so the self test can be completed and the unit is ready for operation. Change the GP485 communication configuration as follows:

- 1) Set the end of message to <LF> (see table 5-5 , **eos**)
- 2) Set the baud rate to same as the Z.UP power supply (see table 5-5 , **spset**)

## 4.4 STATUS INFORMATION AND ERROR HANDLING CHARACTERISTIC

The functions description in Table 5-5 explains that the GP485 records specific status and error information. This means that it stores that information in it's memory so that it is available when requested by the user. The functions description also include an explanation on return of information to the user from the GP485. This is accomplished by information sent to the user from the GP485 over the GPIB.

The GP485 continuously monitors the serial port for transmission errors. If an error is encountered in the serial data, the GP485 records the error. The GP485 can be programmed to ignore serial port errors using the **spign** function.

## 4.5 PROGRAMMING CONSIDERATIONS

- The program examples within the functions description are written in Microsoft QuickBASIC Version 4.5, using National Instruments NI-488.2 function calls. Although the examples in this manual are written in BASIC. The GP485 can be programmed using any language that has access to a GPIB port.

- The following NI-488.2 function call addresses the GP485 to listen and sends it the programming message **spset**, followed by a carriage return.

```
WRT$="SPSET"+CHR$(13)
CALL IBWRT(GP485% , WRT$)
```

If not using the National Instruments NI-488.2 software, be sure your program properly addresses the GP485 and the serial device when writing to and reading from them.

- In the function syntax descriptions, arguments shown in square brackets ( [ ] ) are optional. Do not enter the brackets as part of the argument.

- Function name abbreviations can be used, which include as many characters as necessary to distinguish them from other functions. The abbreviated forms are indicated by **bold** text in the syntax description of each function.

## 4.6 PROGRAMMING MESSAGE FORMAT

You can program the GP485 by sending it programming messages, which are ASCII strings, via it's GPIB port. Each programming message is terminated with a carriage return (<CR>), a linefeed (<LF>), or a carriage return followed by a linefeed (<CR><LF>). This is denoted by <CR> in the syntax portions of the function descriptions and by CHR\$(13) in the BASIC examples.

Programming messages can be entered in any combination of uppercase and lowercase letters.

### 4.6.1 Programming message example

The following lines of code are an example of a programming message in BASIC:

```
WRT$="eos x,10"+CHR$(13)
CALL IBWRT(GP485% , WRT$)
```

The programming message WRT\$ contains **eos**, which is the function name, x and 10 are the arguments, and CHR\$ is the terminating carriage return. This programming message tells the GP485 to assert the **EOI\*** line when it sends the end-of-string character linefeed. The second line of the example is a NI-488.2 function call that allows a personal computer to control the GPIB from Microsoft BASIC. This function outputs the string in WRT\$ to the GP485.

### 4.6.2 How messages are processed

The GP485 processes each programming message on a line-by-line basis. When the GP485 receives a message, it buffers the message, interprets the function name and arguments, then executes the message.

## 4.7 FUNCTION ARGUMENTS

When typing in a function, separate the first argument from the function name with at least one space. Separate each additional argument with at least one space or a comma. In the syntax portions of the function descriptions in Table 5-5, the square brackets ([ ]) that enclosed some arguments indicate that those arguments are optional. Do not enter the brackets as part of the argument.

### 4.7.1 Abbreviations for arguments

The term bool is an abbreviation used for an argument in the functions description.

The values for bool are:

- 1 = true, on or enable
- 0 = false, off or disable

## 4.8 ADDRESSING THE GP485 AND SERIAL PORT

The GP485 uses dual addressing to determine what type of GPIB data is being processed. With dual addressing, the GP485 recognizes two different GPIB addresses. The first address is the GP485 address. When the GP485 receives it's own address, the data received is referred to as programming messages; the data it sends is referred to as status information. The second address is the serial port address. When the GP485 receives the serial port address, the data it sends and receives is referred to as serial data.

### 4.8.1 Address of the GP485

The address of the GP485 is the primary address set with the DIP switch on the top panel. Par. 4.2.3, with the secondary addressing disabled.

## 4.8.2 Address of the serial port

The address of the serial port is the GP485 address plus 1, with the secondary addressing disabled. However, if primary address of 30 with the configuration switch is selected, the serial port is at 0. The primary address is set with the DIP switch on the top panel, refer to Par. 4.2.3.

## 4.8.3 Addressing the GP485 and serial device as listeners

When the GP485 receives its own listen address, it examines the data received over the GPIB, treats it as a programming message, and takes action based on that data. When the GP485 receives the serial device listen address, it forwards the data over the GPIB to the serial port without examining or modifying the data. For example: to send a command from user's computer over the GPIB to the power supply. Before sending the command to the serial port, the GP485 must be configured to the suitable serial port parameters.

Follow these steps to send a command from a computer to a Zup power supply connected to the serial port :

1. Address the GP485 to listen by sending its listen address.
2. Send the programming message "sps 9600 n 8 1 " to the GP485. The GP485 interprets this programming message and acts upon it without sending any data on to the serial device.
3. Address the serial port to listen by sending the serial device listen address to the GP485.
4. Send the command over the GPIB. The GP485 sends the command to the power supply without examining it for meaning.

The LISTEN LED on the GP485 is lit when either the GP485 or the serial device is addressed to listen.

## 4.8.4 Addressing the GP485 and serial device as talkers

When the GP485 receives its own talk address, it sends out status information. When the GP485 receives the serial device talk address, it sends data out to the GPIB that it has received from the serial device. For example: User requests power supply to return status information.

Follow the following steps to retrieve the data:

1. Address the serial power supply to talk by sending the serial device talk address to the GP485. If the GP485 receives the serial device talk address, but has no data in its serial port receive buffer to send it waits for data from the serial power supply to fill the request.
2. Perform a GPIB read of 100 bytes. The GP485 retrieves 100 bytes from its serial port receive buffer and sends them to the user.
3. Find out if the serial power supply has sent more bytes to the GP485 by asking the GP485 to send status information.
  - a. Send the GP485 its listen address.
  - b. Send the programming message **stat n** to the GP485.
  - c. Send the GP485 its talk address.
  - d. Perform a GPIB read of 20 bytes. The GP485 sends its status information, terminated by the GPIB END message. If the GP485 receives its talk address but has nothing to send, it responds to GPIB reads with a carriage return and a linefeed, accompanied by END.

The status information returned contains the number of bytes remaining in the serial port receive buffer. This information helps the user to decide how much data to continue to collect from the serial device. The TALK LED on the GP485 is lit when either the GP485 or the serial power supply is addressed to talk.

## 4.9 GPIB READ AND WRITE TERMINATION METHODS (END and EOS)

The IEEE 488 specification defines two ways that GPIB Talkers and Listeners can identify the last byte of data messages: END and EOS. The two methods permit a Talker to send data messages of any length without the Listener(s) knowing the number of transmission bytes in advance. END and EOS can be used individually or in combination, but the Listener must be configured to detect the end of transmission.

**END message:** The Talker asserts the **EOI\*** (End or Identify) signal while the last data byte is being transmitted. The Listener stops reading when it detects a data byte accompanied by **EOI\***, regardless of the value of the byte.

**EOS character:** The Talker transmits an EOS (end-of-string) character at the end of its data string. The Listener stops receiving data when it detects the EOS character. Either a 7-bit ASCII character or a full 8-bit binary byte can be used.

When the GP485 receives its own talk or listen address, no EOS modes are in effect. When talking, the GP485 asserts **EOI\*** with the last byte of its response. When the GP485 receives the serial device talk address, the EOS modes in effect are those that the user selects using the **eos** function.

## 4.10 SERIAL PORT TRANSMISSION

The GP485 checks the data received from the serial device for errors while it buffers data. If a serial port error occurs, The GP485 records the appropriate error code. There are two ways to determine if a serial port error has occurred:

\* Use the **stat** function to request the GP485 status information. After the serial error code has been reported, it is automatically cleared and no further action to the GP485 is necessary.

\* Serial poll the GP485 and check the serial poll response byte to see if its SERR bit is set. Refer to Par. 4.12 later in this chapter.

Program the GP485 to ignore serial port errors using the **spign** function.

## 4.11 OPERATION OF THE GP485 AS A GPIB DEVICE

The GP485 operates like any other GPIB device and, as such, is configured to respond in certain ways to GPIB commands.

## 4.12 SERIAL POLL RESPONSES

When serial polled, the GP485 returns status information to the GPIB controller through the serial poll response byte. The GP485 maintains this status byte throughout operation, regardless of the **srqen** configuration. Table 4-4 lists the meaning of each bit in the serial poll response byte.

Table 4-4: Serial port response byte

Bit	Mnemonic	Meaning
0	-	Not used
1	BF	Serial port receive buffer is full and serial device not addressed to talk.
2	GERR	GPIB error - see <b>stat</b> Table 5-5
3	SERR	Serial error - see <b>stat</b> Table 5-5
4	BNE	Serial port receive buffer not empty and serial device not addressed to talk.
5	EOS	EOS character received and serial device not addressed to talk.
6	RQS	Request service ( <b>SRQ*</b> asserted)
7	-	Not used

## 4.13 SERVICE REQUEST (SRQ)

### 4.13.1 Service Request at Power On

After Power On, the GP485 defaults to never asserting service request. Using the **srqgen** function, the GP485 can be programmed to assert **SRQ\*** under a variety of cases.

### 4.13.2 SRQ\* conditions

The GP485 will assert **SRQ\*** in a variety of cases related to the operation of the GP485 itself and also to the operation of the Zup units connected to the GP485 serial port.

### 4.13.3 SRQ\* generation by the GP485

The GP485 will assert **SRQ\*** under any of the following circumstances :

1. When a GPIB error occurs, that is EARG, ECMD or ECAP as reported by **stat**.
2. When a serial port error occurs, that is, EPAR, EORN, EOFL or EFMR as reported by **stat**.
3. When the serial device is not addressed as a talker and sends a message to the GP485.

### 4.13.4 SRQ\* generation by Zup Power Supply

A Zup Power Supply will send a string message in the event of Foldback Protection activation, Over Voltage Protection or Over Temperature Protection. For more details about the **SRQ** commands and queries, refer to Zup User's Manual.

The Zup Power Supply will send the message when it is not addressed as a talker and thus will cause the GP485 to assert **SRQ\***. The message consists of three characters and terminated with <CR><LF>.

The first character identifies the SRQ cause : 1-Foldback, 2-OVP, 3-OTP.

The 2nd and 3rd characters identify the Power Supply address.

The Zup Power Supply will be not addressed as a talker if the last command is operational command or DCL.

Example :

String generated by a Zup unit : 120<CR><LF>, means foldback protection was activated in power supply address 20.

The **SRQ\*** can be identified by serial or parallel poll. Refer to par. 4.12 and 4.14 for details. If using serial poll, the serial poll response register decimal value is 112:

Table 4-5: serial poll response.

Bit	Decimal	Mnemonic	Description
4	16	BNE	Serial port receive buffer not empty and serial device not addressed to talk.
5	32	EOS	EOS character received and serial device not addressed to talk.
6	64	RQS	Request service (SRQ*) asserted.

### 4.13.5 GP485 initialize for using SRQ\*

WRT\$= "srq 16"+CHR\$(13)                    'enable to assert **SRQ\*** if the GP485 serial buffer not empty  
CALL IBWRT(GP485%, WRT\$)                    'and the serial device not addressed to talk

## 4.14 PARALLEL POLL

The GP485 sets the ist (individual status) bit whenever it asserts **SRQ\*** and clears ist whenever it unasserts **SRQ\***. The GP485 implements IEEE 488 Parallel Poll (PP) interface function subset PP1. This means it cannot configure itself to respond to parallel polls. It must be configured remotely by an external Controller.

### 4.14.1 Take Control (TCT)

This command has no effect on the GP485. It would not make sense for control to pass to the GP485, since all programming messages and GPIB commands must be sent to it from another GPIB device.

### 4.14.2 Group Execute Trigger (GET)

This command has no effect on the GP485.

### 4.14.3 Go To Local (GTL)

This command has no effect on the GP485.

### 4.14.4 Device Clear

When the GP485 receives the universal Device Clear (DCL) command or when it receives It's listen address and the Selected Device Clear (SDC) command, it clears both it's status buffer and it's serial port receive buffer. It also resets the GPIB serial poll response byte to zero and unasserts **SRQ\***.

## CHAPTER 5 FUNCTIONS AND COMMANDS

### 5.1 INTRODUCTION

This chapter contains descriptions of the mode functions that can be used to program the GP485. These functions are in alphabetical order for easy reference, order by group and explanations how to use.

### 5.2 FUNCTION NAMES

The function names have been selected to indicate the purpose of each function, thereby making programs easy to understand. However, if user's prefer to reduce some overhead in the program and do not mind giving up these advantages, use only as much of the function name as is necessary to distinguish it from other functions. This abbreviated form of the function name is shown in **bold** text in the function tables and in the syntax portions of the function descriptions.

#### 5.2.1 Default settings and related functions

Tables 5-1 and 5-2, list power-on characteristics of the GP485 and the functions that can be used to change those characteristics.

Table 5-1: Serial Port Characteristics

Characteristic	Power-on value	Related function
Echo bytes to serial port	No	<b>echo</b>
Enable serial port communication	Yes	<b>onl</b>
Baud rate	9600	<b>spset</b>
Parity	None	<b>spset</b>
Bits	8	<b>spset</b>
Stop bits	1	<b>spset</b>
Send XON/XOFF	No	<b>xon</b>
Recognize XON/XOFF	No	<b>xon</b>
Report serial errors	No	<b>spign</b>

Table 5-2: GPIB Characteristics

Characteristic	Power-on value	Related function
End-of-string modes	None	<b>eos</b>
Allow GP485 to assert SRQ	No	<b>srqen</b>

#### 5.2.2 List of functions by group

The GP485 functions are divided into three groups: GPIB functions, serial port functions and general use functions. These groups are defined in Table 5-3.

Table 5-3: Functions by group

General functions	GPIB functions	Serial port functions
<b>onl</b>	<b>eos</b>	<b>echo</b>
<b>stat</b>	<b>srqen</b>	<b>spset</b>
		<b>xon</b>
		<b>spign</b>

## 5.2.3 Alphabetical function list

Table 5-4 separates the function in alphabetical order.

Table 5-4: Alphabetical function list

<b>echo</b> on/off	Echo characters received from serial port
<b>eos</b> modes, eoschar	Change or disable GPIB end-of-string termination mode
<b>onl</b> on/off	Place the GP485 serial port online/offline
<b>spign</b> on/off	Ignore serial port errors
<b>spset</b> modes	Change serial port parameters
<b>srqen</b> mask	Set conditions for asserting SRQ
<b>stat</b> options	Return GP485 status
<b>xon</b> modes	Change serial port Xon/Xoff protocol

## 5.3 COMMAND FUNCTION SYNTAX

Table 5-5: functions syntax

<p><b>echo</b> [bool]&lt;CR&gt;</p>	<p>Use in a debugging environment, when a terminal is connected to the GP485 instead of serial device. Data that the GP485 would send to the power-supply is displayed on the terminal screen. User can also write characters on the terminal to send to the GP485.</p> <p>bool= 0 echo off 1 echo on</p> <p>* call <b>echo</b> without argument, returns it's current status. * <b>echo</b> is disabled by default. * <b>echo</b> remains in effect until <b>echo</b> called again, call <b>onl</b> or turn off the GP485.</p> <p>Example:</p> <pre>1. WRT\$="echo 1"+CHR\$(13)      'Enable character    CALL IBWRT(GP485%, WRT\$)    'echoing 2. WRT\$="echo"+CHR\$(13)       'What is the current status?    CALL IBWRT(GP485%, WRT\$)    'RESP\$ contains 1&lt;CR&gt;&lt;LF&gt;    CALL IBRD(GP485%, RESP\$)</pre>
<p><b>eos</b> [X[B]eoschar]&lt;CR&gt;</p> <p>or</p> <p><b>eos</b> D&lt;CR&gt;</p>	<p>Use <b>eos</b> to enable the GP485 to assert <b>EOI</b>* and add GPIB END message to the data string sent by the serial device when the string contains the specified end-of-string character.</p> <p><b>eos</b> applies only when the GP485 has received the serial power-supply talk address and is sending serial data to the GPIB.</p> <p>X,B - set <b>EOI</b>* with eos (XEOS) and compare all 8 bits of EOS bytes (BIN) when sending data from the power-supply. D - EOS mode disable.</p> <p>* EOS mode is disabled by default. * call <b>eos</b> without an argument returns it's current status. * The assignment made by this function remains in effect until <b>eos</b> called again, call <b>onl</b> or turn off the GP485.</p> <p>Example:</p> <pre>1. WRT\$="EOS X,B,10"+CHR\$(13)  'send EOI with &lt;CR&gt;    CALL IBWRT(GP485%, WRT\$)    'compare 8 bit 2. WRT\$="eos"+CHR\$(13)        'What is the current status?    CALL IBWRT(GP485%, WRT\$)    'RESP\$ contains    CALL IBRD(GP485%, RESP\$)    'X,B,10&lt;CR&gt;&lt;LF&gt;</pre> <p>Note: The Zup power supply series default termination is &lt;LF&gt; therefore Example1 should be performed at each power-on of the GP485.</p>

Table 5-5: functions syntax contd.

<p><b>onl</b> [bool]&lt;CR&gt;</p>	<p>Use <b>onl</b> to disable communications between GP485 and serial port or to reset the GP485 characteristic to its default values. Placing the GP485 offline is like disconnecting its serial cable from the serial device.</p> <p>bool= 0 offline 1 online</p> <p>* GP485 is online by default * Call <b>onl</b> without an argument returns its current status</p> <p>Example: 1. WRT\$="onl 1"+CHR\$(13)           'Puts GP485 online    CALL IBWRT(GP485%, WRT\$)       'and restores power-up values 2. WRT\$="ONL 0"+CHR\$(13)       'Puts GP485 offline    CALL IBWRT(GP485%, WRT\$)</p>
<p><b>spign</b> [bool]&lt;CR&gt;</p>	<p>Use to ignore or not ignore the occurrence of serial port errors. If not to ignore the GP485 does not store characters that contain serial errors. Also, the error is indicated in the serial error code that is returned by the <b>stat</b> function. If to ignore, the GP485 stores serial port errors in the buffer which are later sent out of the GPIB port when the serial device is talk addressed. No error serial code is reported by <b>stat</b> function. By default, the GP485 ignores serial port errors. The serial port errors include parity, overrun, framing and overflow errors.</p> <p>bool= 0 don't ignore serial port errors 1 ignore serial port errors</p> <p>* Call <b>spign</b> without an argument, the GP485 returns the current setting. * <b>spign</b> remains in effect until <b>spign</b> called again, call <b>onl</b> or turn off GP485.</p> <p>Example: 1. WRT\$="spign 0"+CHR\$(13)       'Do not ignore    CALL IBWRT(GP485%,WRT\$)       'Serial port errors 2. WRT\$="spign 1"+CHR\$(13)       'Ignore serial port    CALL IBWRT(GP485%, WRT\$)       'errors</p>
<p><b>spset</b> [baud] [parity] [databits] [stopbits]&lt;CR&gt;</p>	<p>Use <b>spset</b> at the beginning of the program to set the GP485 serial port characteristics (baud rate, parity, data bits and stop bits) to match the Zup power supply.</p> <p>Possible values: baud [bits/s]: 300, 600, 1200, 2400, 4800, 9600 parity: n = none, e = even, o = odd data bits [b/c]: 7,8 stop bits: 1,2</p> <p>* default values: 9600 n 8 1. * <b>spset</b> without an argument returns its current serial port configuration. * <b>spset</b> remains in effect until <b>spset</b> is called again, call <b>onl</b> or turn off GP485.</p> <p>Example: 1. WRT\$="spset 1200 n"+CHR\$(13)   'Set the serial port use    CALL IBWRT(GP485%,WRT\$)       '1200 b/s , no parity 2. WRT\$="spset"+CHR\$(13)       'What are current serial    CALL IBWRT(GP485%, WRT\$)       'port settings    CALL IBRD(GP485%,RESP\$)       'RESP\$ will contain                                       '1200 n 8 1&lt;CR&gt;&lt;LF&gt;</p> <p>Note: The Zup power supply series data format is no parity, 8 data bits and one stop bit, therefore the user needs to set only the baud rate.</p>

Table 5-5: functions syntax contd.

<p><b>srqen</b> [mask]&lt;CR&gt;</p>	<p>Use <b>srqen</b> to allow the GP485 to assert <b>SRQ*</b> under the conditions described in Table 5-5-1.  mask= 0 never assert <b>SRQ*</b>  &gt;0 assert <b>SRQ*</b> according to Table 5-5-1</p> <p>Table 5-5-1: SRQ mask bits</p> <table border="1" data-bbox="597 512 1263 846"> <thead> <tr> <th>Bit</th> <th>Hex Value</th> <th>Decimal Value</th> <th>Mnemonic</th> <th>Description</th> </tr> </thead> <tbody> <tr> <td>0</td> <td>1</td> <td>1</td> <td>-</td> <td>Not used</td> </tr> <tr> <td>1</td> <td>2</td> <td>2</td> <td>BF</td> <td>Serial port receive buffer full and serial device not addressed to talk</td> </tr> <tr> <td>2</td> <td>4</td> <td>4</td> <td>GERR</td> <td>GPIB error - (see <b>stat</b>)</td> </tr> <tr> <td>3</td> <td>8</td> <td>8</td> <td>SERR</td> <td>Serial error - (see <b>stat</b>)</td> </tr> <tr> <td>4</td> <td>10</td> <td>16</td> <td>BNE</td> <td>Serial port receive buffer not empty and serial device not addressed to talk</td> </tr> <tr> <td>5</td> <td>20</td> <td>32</td> <td>EOS</td> <td>EOS character received and serial device not addressed to talk</td> </tr> <tr> <td>6</td> <td>40</td> <td>64</td> <td>-</td> <td>Not used</td> </tr> <tr> <td>7</td> <td>80</td> <td>128</td> <td>-</td> <td>Not used</td> </tr> </tbody> </table> <p>To determine the mask value, add up the hex or decimal values of each condition of which <b>SRQ*</b> is to be asserted.  Example: for asserting <b>SRQ*</b> on GPIB errors and serial port errors mask=12 ( 4 for GERR and 8 for SERR ).</p> <p>* <b>srqen</b> mode is disabled by default - <b>SRQ*</b> never asserted.  * call <b>srqen</b> without an argument returns a decimal string that indicates the current setting.  * <b>srqen</b> remains in effect until <b>srqen</b> called again, call <b>onl</b> or turn off GP485.</p> <p>Example:  1. WRT\$="srqen 0"+CHR\$(13)            'Never assert <b>SRQ*</b>  CALL IBWRT(GP485%, WRT\$)  2. WRT\$="srqen 4"+CHR\$(13)            'Asserts <b>SRQ*</b> when a  CALL IBWRT(GP485%, WRT\$)            'GPIB error occurs.</p>	Bit	Hex Value	Decimal Value	Mnemonic	Description	0	1	1	-	Not used	1	2	2	BF	Serial port receive buffer full and serial device not addressed to talk	2	4	4	GERR	GPIB error - (see <b>stat</b> )	3	8	8	SERR	Serial error - (see <b>stat</b> )	4	10	16	BNE	Serial port receive buffer not empty and serial device not addressed to talk	5	20	32	EOS	EOS character received and serial device not addressed to talk	6	40	64	-	Not used	7	80	128	-	Not used
Bit	Hex Value	Decimal Value	Mnemonic	Description																																										
0	1	1	-	Not used																																										
1	2	2	BF	Serial port receive buffer full and serial device not addressed to talk																																										
2	4	4	GERR	GPIB error - (see <b>stat</b> )																																										
3	8	8	SERR	Serial error - (see <b>stat</b> )																																										
4	10	16	BNE	Serial port receive buffer not empty and serial device not addressed to talk																																										
5	20	32	EOS	EOS character received and serial device not addressed to talk																																										
6	40	64	-	Not used																																										
7	80	128	-	Not used																																										
<p><b>stat</b> [[c] n]&lt;CR&gt;  or  <b>stat</b> [c] s&lt;CR&gt;  or  <b>stat</b> [c] n s&lt;CR&gt;</p>	<p>Use <b>stat</b> to obtain the status of the GP485 to see if certain conditions are currently present. <b>stat</b> is used to see if the previous operation resulted in an error.  n - Returned status information as numeric string.  s - Returned status information in symbolic format (mnemonic string).  c - Returns status information after each programming message eliminating the need to call <b>stat</b> after each programming message.</p> <p>* Call <b>stat</b> without an argument, continuous status reporting is disabled.  * When calling <b>stat</b> with both n and s modes specified, the numeric status is always returned first.  * The <b>stat</b> contains four pieces of information: GP485 status, GPIB error code, serial error code and a count which indicates the number of bytes currently contained in the GP485 serial port receive buffer. The GP485 returns a &lt;CR&gt;&lt;LF&gt; following each piece of the response and asserts <b>EOI*</b> with the final &lt;LF&gt; that comes after count.</p>																																													

Table 5-5: functions syntax contd.

Status represents a combination of GP485 conditions. Inside the GP485, status is stored as a 16-bit integer. Each bit in the integer represents a single condition. A bit value of 1 indicates the corresponding condition is in effect. A bit value of 0 indicates the condition is not in effect. Because more than one GP485 condition can exist at one time, more than one bit can be set in status. The highest order bit of status, also called the sign bit, is set when the GP485 detects either a GPIB error or a serial port error. When status is negative, an error condition exists.

Table 5-5-2 lists the values and descriptions of GPIB status conditions that might be returned by the **stat** function.

Table 5-5-2: GP485 conditions returned by **stat**

Numeric Value (n)	Symbolic Value (s)	Description	Bit
-32768	ERR	Error detected	15
16384	-	Reserved	14
8192	-	Reserved	13
4096	-	Reserved	12
2048	-	Reserved	11
1024	-	Reserved	10
512	-	Reserved	9
256	CMPL	Operation completed	8
128	-	Reserved	7
64	-	Reserved	6
32	-	Reserved	5
16	-	Reserved	4
8	-	Reserved	3
4	-	Reserved	2
2	-	Reserved	1
1	-	Reserved	0

Table 5-5-3 lists the values and descriptions of GPIB error conditions that might be returned by **stat**. Table 5-5-4 lists the serial port errors that might be returned by **stat**.

Table 5-5-3: GPIB error conditions returned by **stat**

Numeric Value (n)	Symbolic Value (s)	Description
0	NGER	No GPIB error condition to report
1	-	Reserved
2	-	Reserved
3	-	Reserved
4	EARG	Invalid argument or arguments
5	-	Reserved
6	-	Reserved
7 - 10	-	Reserved
11	ECAP	No capability for operation
12 - 16	-	Reserved
17	ECMD	Unrecognized command

Table 5-5: functions syntax contd.

<p>Table 5-5-4: Serial port error conditions returned by <b>stat</b></p>	<b>Numeric Value (n)</b>	<b>Symbolic Value (s)</b>	<b>Description</b>
	0	NSER	No serial port error condition to report
	1	EPAR	Serial port parity error
	2	EORN	Serial port overrun error
	3	EOFL	Serial port receive buffer overflow
	4	EFRM	Serial port framing error

Example:

```

10 'Turn on continuous status reporting ,
20 'in numeric format.
30 WRT$="stat c n"+CHR$(13)
40 CALL IBWRT (GP485%,WRT$)
50 'If we have 3 bytes in the serial port
60 'buffer, a typical response would be:
70 '256<CR><LF>0<CR><LF>0<CR><LF>3<CR><LF>
80 'Read the GP485 status; read 30
90 'bytes or until EOI is received.
100 RD$=SPACE$(30)
110 CALL IBRD(GP485%,RD$)
120 'Print the status information.
130 Print "GP485 status is: ",RD$

```

## **CHAPTER 6 MAINTENANCE**

### **6.1 INTRODUCTION**

This chapter contains maintenance information for the GP485 model.

### **6.2 UNITS UNDER WARRANTY**

Units requiring repair during the warranty period should be returned to a Nemic-Lambda authorized service facility. Refer to the address listing on the back cover of this user's manual. Unauthorized repairs performed by other than authorized service facilities may void the warranty.

### **6.3 PERIODIC MAINTENANCE**

No routine maintenance of the GP485 is required except for periodic cleaning. To clean, disconnect the unit from the AC supply and allow 30sec for discharging internal voltage. The front panel and the metal surfaces should be cleaned using a dry cloth. Use low pressure compressed air to blow dust from the unit.

### **6.4 ADJUSTMENT AND CALIBRATION**

No internal adjustment or calibration are required. Units that are returned for service will be calibrated at the service facility. There is NO REASON to open the GP485 cover.

### **6.5 PART REPLACEMENT AND REPAIRS**

As repairs are made only by the manufacturer or authorized service facilities, no part replacement information will be discussed here. In case of failure, unusual or erratic operation of the unit, contact a Nemic-Lambda sales or service facility nearest you. Please refer to the Nemic-Lambda sales offices listed on the back cover of this user's manual.

### **6.6 FUSE RATINGS**

Littelfuse Inc. type 215 series: rated 250V 2A.

## GP485 USER'S MANUAL INDEX

<b>A</b>		<b>R</b>	
ac cables	4,6	rack mounting	6
ac cord	7	RS485 cable	7,8,9
accessories	4	rear panel	12
addressing	15,16		
<b>C</b>		<b>S</b>	
cooling	6	serial link cable	4,9
configuration	9	safety symbols	3
connections in a system	8	stat	17,23,24,25
connecting the cables	7	serial poll	17
		srq	18,23
		spign	22
		spset	22
		srqen	23
<b>D</b>		<b>T</b>	
default settings	20	top panel	13
		talker	16
		turn on	14
<b>E</b>			
eos	17,21		
echo	21		
<b>F</b>			
fuse	2,26		
front panel	11		
functions	20,21		
<b>G</b>			
grounding	2		
GPIB cable	7,9		
<b>I</b>			
indicators	11		
<b>L</b>			
listener	16		
<b>O</b>			
outline drawing	10		
onl	22		
<b>P</b>			
programming considerations	14		
power on	14		
programming message	15		
parallel poll	19		



KARMIEL INDUSTRIAL ZONE, POB 500, ZC-20101, ISRAEL.  
TEL: 972-4-9887491 FAX: 972-4-9887487

## DECLARATION OF CONFORMITY

We Nemic-Lambda Ltd., located at Karmiel Industrial zone, Israel, declare under our sole responsibility that the product:

Product Name: GPIB-RS485 CONTROLLER

Model: GP485

Conforms to the following product specifications:

Safety: EN61010-1 : 1993 ; EN61010-1/A2 : 1995

Electromagnetic Emissions:

EN55011:1991 Conducted Emissions: Class B

Radiated Emissions: Class B

IEC1000-4-2:1995 4.0KV CD, 4.0KV AD

IEC1000-4-3:1995 3V/m

IEC1000-4-4:1995 1.0KV AC Power Lines

0.5KV Communication Lines

IEC1000-4-5:1995 2.0KV AC Power Lines

1.0KV AC to Ground

1.0KV Communication Lines

IEC1000-4-6:1996 3V

IEC1000-4-11:1994

IEC1000-3-2:1995

IEC1000-3-3:1995

The product herewith complies with the requirements of the Low Voltage Directive 73/23/EEC and the EMC directive 89/336/EEC for Electrical Equipment used in Measurement Control and Laboratory environments, and carries the CE mark accordingly.

Our importer to the EU is Coutant Lambda Limited, located at Kingsley Avenue, Ilfracombe, Devon EX34 8ES, UK. Further, all products covered by this declaration are manufactured by processes which ensure continued compliance of the products with the requirements of the Low voltage and the EMC directives.

Name of Authorized Signatory: Adam Rawicz-Szczerbo

Signature of Authorized Signatory:

Position of Authorized Signatory: Managing Director, Coutant Lambda

Date: 27/10/99

Place where signed: Ilfracombe, UK

\_\_\_\_\_